

# Imatinib Adherence Testing

ARUP offers a **therapeutic drug monitoring** (TDM) test for patients with chronic myelogenous leukemia (**CML**) or gastrointestinal stromal tumors (**GISTs**) who are being treated with the tyrosine kinase inhibitor (**TKI**) imatinib.

## Why Is This Testing Important?

Imatinib is a first-line treatment for CML and GIST and is most effective when trough levels ( $C_{min}$ ) are maintained above a predetermined therapeutic level:

- CML: 1,000 ng/mL target
- GIST: 1,100 ng/mL target

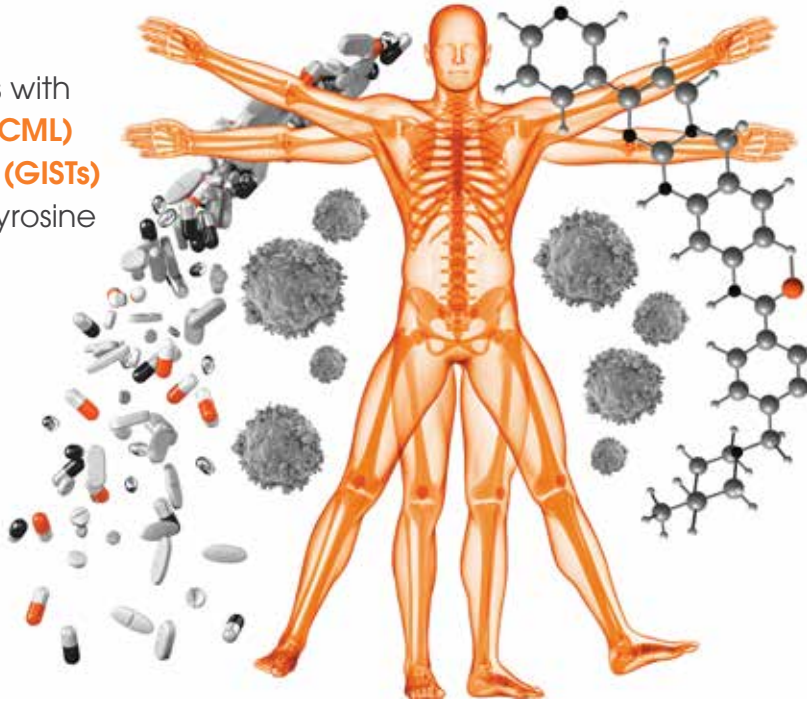
Imatinib, when dosed according to TDM, yields a similar major molecular response (MMR) as second-generation TKIs.

## Laboratory Testing at ARUP

### Test Code and Name

#### 3000539 Imatinib

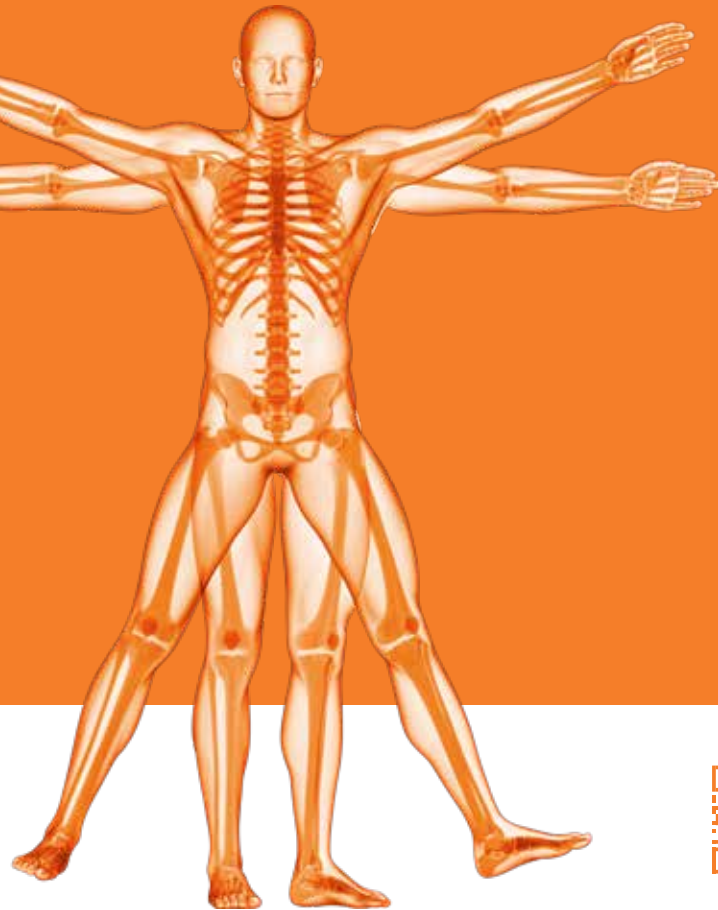
- Ordering recommendation: Optimize drug therapy and monitor patient adherence
- Fast turnaround time (1–5 days)



For additional information and references, visit:

[aruplab.com/testing/imatinib](http://aruplab.com/testing/imatinib)





[aruplab.com](http://aruplab.com)

**ARUP LABORATORIES**

500 Chipeta Way  
Salt Lake City, UT 84108-1221

Phone: 800-522-2787

Fax: 801-583-2712

keyword: IMATINIB

*A nonprofit enterprise of the University of Utah  
and its Department of Pathology*

© 2021 ARUP Laboratories  
BD-CS-068, Rev 1, September 2021



[aruplab.com/  
testing/imatinib](http://aruplab.com/testing/imatinib)