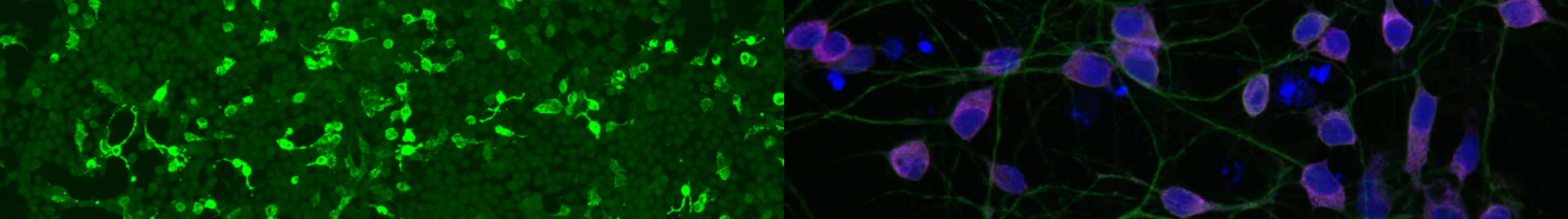


# Targeted Testing for Autoimmune Neurologic Disease

Tailored Solutions, Trusted Experts





## DIAGNOSING AUTOIMMUNE NEUROLOGIC DISEASE

Autoimmune neurologic diseases comprise a broad category of rare conditions, including autoimmune encephalitis, paraneoplastic neurologic syndromes (associated with cancer), and related disorders.

Targeted phenotype-specific antibody panels are recommended when testing for autoimmune neurologic disease. The tests on ARUP’s industry-leading test menu are tailored to fit the needs of your patients.

These tests can be used to evaluate diverse phenotypes, including, but not limited to:

- Dementia
- Encephalopathy
- Myelopathy
- Demyelination
- Epilepsy
- Stiff-person syndrome
- Dysautonomia
- Movement disorders
- Vision loss

ARUP also offers pediatric-specific antibody panels for individuals younger than 18 years.

### WHY CHOOSE ARUP?

Our tailored solutions include a wide array of phenotype-specific, broad panel, and standalone antibody tests to meet your diagnostic needs. ARUP also offers pediatric-specific antibody panels for individuals younger than 18 years.



#### Exceptional Clinical Coverage

ARUP’s tests include antibodies with significant clinical impact that cover an estimated 95–99% of disease cases.



#### Excellent Turnaround Time

Results of our panel tests are reported within three to 10 days. Results of smaller, phenotype-specific panels and standalone tests may be reported in even less time.



#### Improved Diagnostic Yield With Phenotype-Specific Panels

New antibodies are frequently discovered, and panel tests may become more expensive as these antibodies are added. ARUP’s targeted panels include only the antibodies associated with particular clinical phenotypes to efficiently maximize diagnostic yield.



#### Broad-Coverage Panel Testing

ARUP’s broad panel tests include a large number of antineural antibodies. The results of these tests can be used for the evaluation of unexplained, subacute-onset neurologic diseases, including encephalitis, in the presence or absence of malignancy.



#### Single Antibody Testing Available

We offer standalone testing for single antibodies for situations in which panels aren’t needed.

For more on autoimmune neurology and our test offerings, please visit:

## ARUP’S EXTENSIVE TEST MENU

In most cases, both serum and cerebrospinal fluid (CSF) testing should be ordered simultaneously to maximize diagnostic yield.

Test Code	Test Name
Phenotype-Specific Antibody Panels	
3001283	Autoimmune CNS Demyelinating Disease Reflexive Panel
3006203	Autoimmune Dysautonomia Panel, Serum
3006201	Autoimmune Encephalopathy/Dementia Panel, Serum
3006202	Autoimmune Encephalopathy/Dementia Panel, CSF
3006204	Autoimmune Epilepsy Panel, Serum
3006205	Autoimmune Epilepsy Panel, CSF
3018964	Autoimmune Movement Disorder Panel, Serum
3018966	Autoimmune Movement Disorder Panel, CSF
3006208	Autoimmune Myelopathy Panel, Serum
3006209	Autoimmune Myelopathy Panel, CSF
3003017	Autoimmune Neuromuscular Junction Reflexive Panel
3006234	Autoimmune Stiff-Person Disorders Panel, Serum
3006235	Autoimmune Stiff-Person Disorders Panel, CSF
3016804	Autoimmune Vision Loss Panel, Serum
3002929	Paraneoplastic Reflexive Panel
3004517	Paraneoplastic Reflexive Panel, CSF
Pediatric Antibody Panels	
3006210	Autoimmune Pediatric CNS Disorders, Serum
3006211	Autoimmune Pediatric CNS Disorders, CSF
Broad Antibody Panels	
3018965	Autoimmune Neurologic Disease Panel With Reflex, Serum
3018967	Autoimmune Neurologic Disease Panel With Reflex, CSF

[aruplab.com/AND-Testing](https://aruplab.com/AND-Testing)

Antineural antibody testing for autoimmune neurologic disease is complex and evolving. Our medical directors are available to support clinical decision-making in this rapidly growing area of neurology.

To have a representative from ARUP Laboratories contact you with more information, visit [aruplab.com/ANDinfo](https://aruplab.com/ANDinfo).

### MEDICAL EXPERTS



**Lisa K. Peterson, PhD, D(ABMLI)**

Medical Director, Immunology, ARUP Laboratories

Associate Professor of Pathology (Clinical), University of Utah School of Medicine



**Tammy Smith, MD, PhD**

Clinical Consultant, Autoimmune Neurology, ARUP Laboratories

Assistant Professor of Neurology, Division of Neuroimmunology, University of Utah School of Medicine

### RESOURCES

1. ARUP test directory: [ltd.aruplab.com](https://ltd.aruplab.com)
2. ARUP Autoimmune Neurologic Disease Components tables: [aruplab.com/ANDcomponents](https://aruplab.com/ANDcomponents)
3. ARUP Consult® Autoimmune Neurologic Diseases - Antineural Antibody Testing: [arupconsult.com/content/autoimmune-neurologic-diseases](https://arupconsult.com/content/autoimmune-neurologic-diseases)





**ARUP LABORATORIES**

500 Chipeta Way  
Salt Lake City, UT 84108-1221  
Phone: 800-522-2787  
Fax: 801-583-2712

*ARUP is a nonprofit enterprise of the University of Utah  
and its Department of Pathology.*

